

TROUBLE FAST APPROACHING
FOR STATES

AT LEAST

6,000
PROJECTS

MAY STOP IN THEIR TRACKS



BECAUSE WITHOUT FEDERAL INVESTMENT
states can't bear the burden

STATE SHARE
WITH MAP-21

55%

STATE SHARE
WITHOUT MAP-21

100%

SHARE OF FUNDING FOR HIGHWAY AND TRANSIT PROJECTS

DECISION *Point*

The Highway Trust Fund needs a long-term, sustainable source
of funding to keep America on the right path.

THIS INVESTMENT WILL:

- **GROW** OUR ECONOMY
- **CREATE** AND SUSTAIN JOBS
- **IMPROVE** OUR MOBILITY
AND QUALITY OF LIFE

SUPPORT THE HIGHWAY TRUST FUND.

And help move our nation forward.

WHAT'S AT STAKE FOR YOUR STATE?
LEARN MORE BY VISITING
Invest.Transportation.org/StateImpact

About AASHTO

AASHTO is a nonprofit, nonpartisan association representing highway and transportation departments in the 50 states, the District of Columbia, and Puerto Rico. As the voice of transportation, AASHTO works to educate the public and key decision makers about the critical role that transportation plays in securing a good quality of life and sound economy for our nation.

© Copyright AASHTO 2014. All rights reserved.

For complete references, please visit
invest.transportation.org/references

Questions or comments? Email info@ashto.org.

AASHTO
THE VOICE OF TRANSPORTATION

NATION *AT A Crossroads*

Without a strong transportation network, America goes nowhere.
And without federal investment, our system falls apart.

*What happens to our economic future if the
Highway Trust Fund (HTF) dead-ends?*

\$51

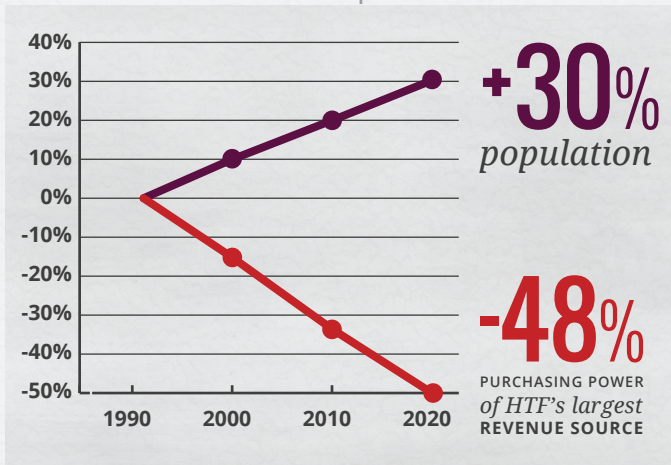
BILLION
IN MAP-21
funding will
EXPIRE IN FY2014

THE HTF IS PROJECTED
TO BE INSOLVENT BY
SEPTEMBER 2014

invest.transportation.org

AASHTO
THE VOICE OF TRANSPORTATION

Investment hasn't kept up.



Infrastructure continues to fail.

54% OF AMERICA'S MAJOR ROADS are rated ★★★★★ **POOR OR MEDIOCRE**

1 IN 4

BRIDGES NEEDS **SIGNIFICANT REPAIR** OR CAN'T HANDLE TODAY'S TRAFFIC



45% OF AMERICANS DON'T HAVE access to transit

BY 2030, WE'LL SEE A

25% INCREASE

in overall **vehicle travel**

64% INCREASE

in travel by large **commercial trucks**



Is our safety at risk?

33,561 PEOPLE DIED IN traffic crashes in 2012

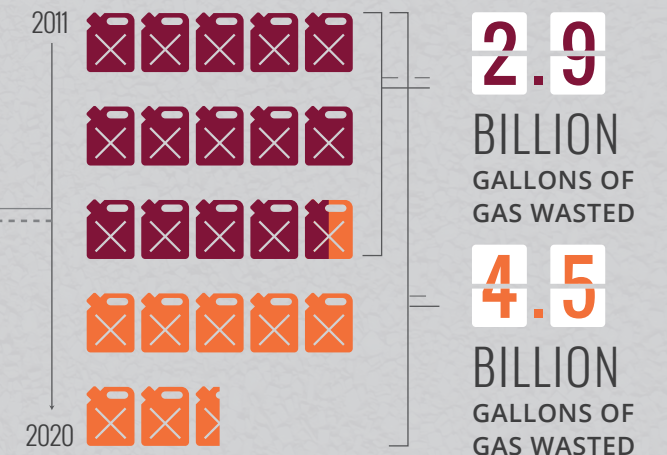
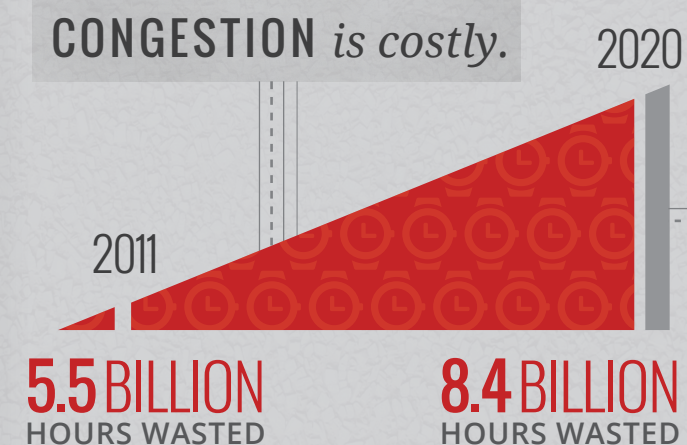
ROAD CONDITIONS ARE A FACTOR IN **1 IN 3** U.S. TRAFFIC FATALITIES



GRIDLOCK Ahead

Loss of MAP-21 funding and HTF insolvency will endanger our economy and mobility.

CONGESTION is costly.



Costing the average commuter

MORE THAN \$800 AND A WORK WEEK EACH YEAR

660,400

US JOBS WILL BE IN JEOPARDY

That's more people than live in ...

